



Gower College Swansea
Coleg Gwyr Abertawe

Wyneb Newidiol Addysg Bellach yn Abertawe Coleg Gŵyr Abertawe



The Changing Face of Further Education in Swansea Gower College Swansea

Cynnwys

- Cyfeiriadau Strategol
- Gweithrediadau Busnes
- Gweithio mewn Partneriaeth
- Cyllid ac Ystadau

Contents

- Strategic Directions
 - Business Operations
 - Partnership Working
 - Finance and Estates
- 

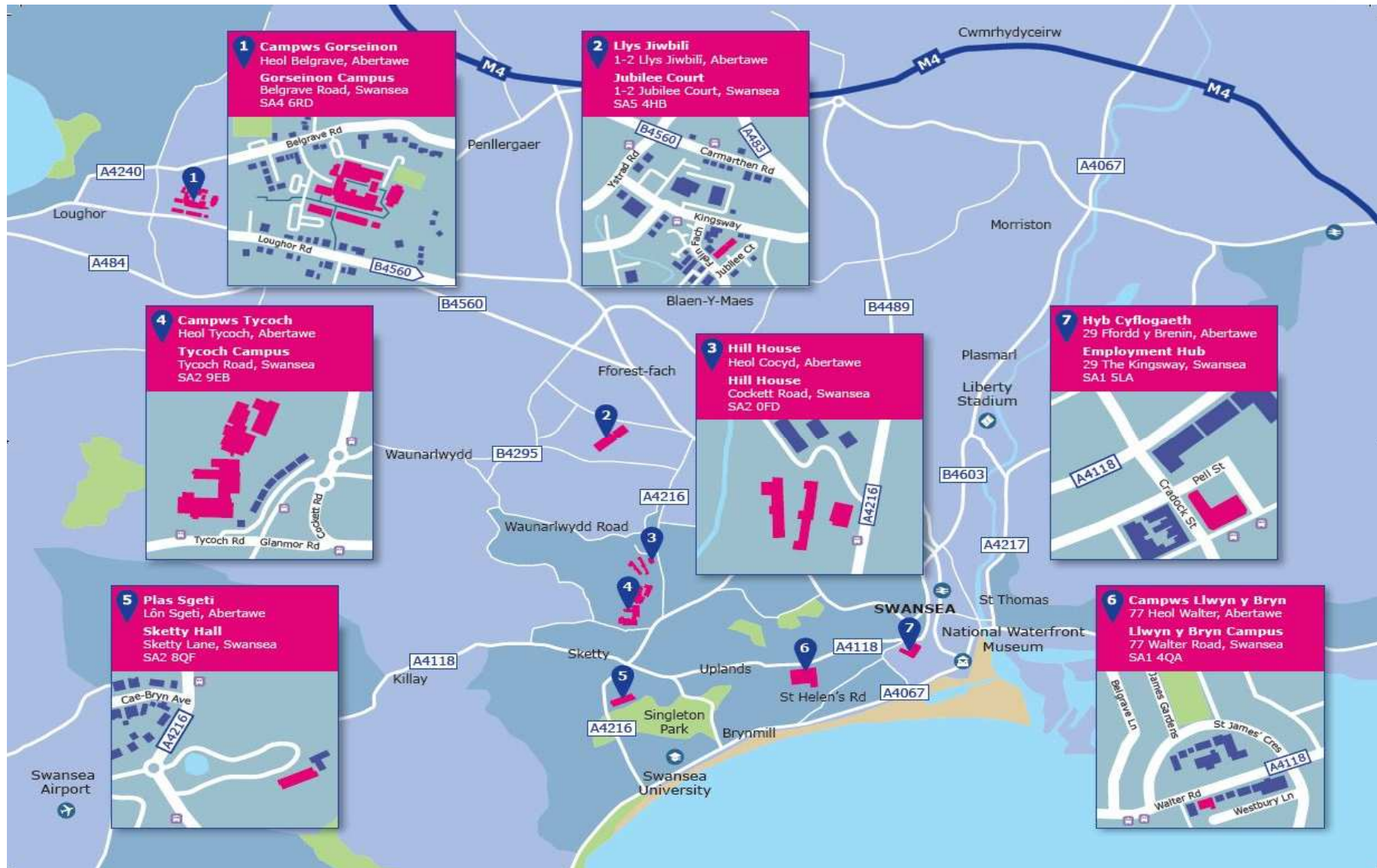
Cyfeiriadau Strategol

- Rhoi'r **dysgwr** wrth wraidd popeth a wnawn
- Sicrhau'r **ansawdd** gorau posibl ym mhopeth a wnawn
- Cael yr **effaith** gadarnhaol fwyaf posibl ar les economaidd a chymdeithasol dysgwyr unigol yn Abertawe a De-orllewin Cymru
- Ceisio bod yn sefydliad **rhagorol**, sy'n tyfu mewn modd cynaliadwy, yn arloesi ac yn buddsoddi

Strategic Directions

- Put the **learner** at the centre of everything we do
- Deliver the highest **quality** possible in everything we do
- Achieving the highest possible positive **impact** on the economic and social wellbeing of individual learners in Swansea and the South West Wales region
- Strive to be an **excellent** organisation, growing sustainably, innovating and investing

Ystad y Coleg / College Estate



Dysgwyr Amser Llawn 16-19 oed

Niferoedd 2015 - 16

- Cyfanswm y 7 Chweched Dosbarth Ysgol 1,556
- Cyfanswm y Coleg 4,532
roedd 1,512 ohonynt yn astudio Safon Uwch

Full Time 16-19 year olds

Numbers 2015 - 16

- Total 7 x School Sixth Forms 1,556
- Total College 4,532
of whom 1,512 were studying A Levels

Dysgwyr Amser Llawn 16-19 oed



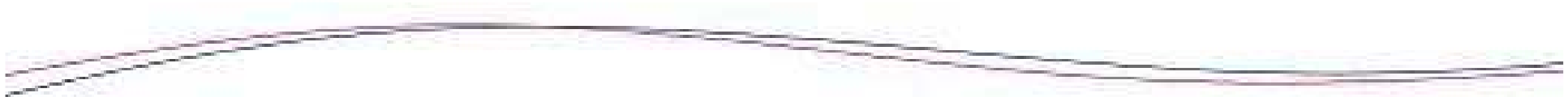
Canlyniadau Safon Uwch A*- C 2016 – 17

- Cyfartaledd Ysgolion Cymru 74%
- Cyfartaledd Cymru 75%
- Coleg 82%

Full Time 16 - 19 year olds

A Level Outcomes A*- C 2016 – 17

- Swansea Schools Average 74%
- Wales Average 75%
- College 82%



Gweithio mewn Partneriaeth ag Ysgolion



- Grwpiau 14 – 16
- Rhaglen 'Pont' i'r rhai 'mewn perygl'
- Addysgu Safon Uwch mewn un ysgol
- Arweinydd ar gyfer Canolfan Seren


Partnership Working with Schools

- 14 – 16 Groups
- 'Bridge' programme for those 'at risk'
- Delivering A Levels at one school
- Lead for Seren 'hub'

Gweithio mewn Partneriaeth

- Dysgu a Partneriaeth Sgiliau Rhanbarthol
- Bwrdd Gwasanaethau Cyhoeddus • Partneriaeth Dysgu
- Adfywio Economaidd • Plant a Phobl Ifanc
- NEETS • Sgiliau • Dysgu Oedolion yn y Gymuned
- Partneriaeth Sgiliau Prifysgol/Coleg (CUSP)

Partnership Working

- Regional Learning and Skills Partnership
 - Public Service Board • Learning Partnerships
 - Economic Regeneration • Children and Young People
 - NEETS • Skills • Adult Community Learning
 - College University Skills Partnership (CUSP)
- 

Partneriaethau Addysg Uwch

- Nifer y cyrsiau 15 (2017) -> 28 (2020)
- Nifer y partneriaid 4 (2017) -> 6/7 (2020)
- Nifer y myfyrwyr 315 (2017) -> 620 (2020)

Higher Education Partnerships

- Number of courses 15 (2017) -> 28 (2020)
- Number of partners 4 (2017) -> 6/7 (2020)
- Number of students 315 (2017) -> 620 (2020)

Gweithio gyda chyflogwyr

- Dysgu seiliedig ar waith (tua 550 o gyflogwyr)
- Sgiliau ar gyfer Diwydiant 2 (tua 400 o gyflogwyr)
- Gweithio gyda Track Training

Working with employers

- Work based learning (approx 550 employers)
- Skills for Industry 2 (approx 400 employers)
- Working with Track Training

Cyfleoedd datblygiadau busnes eraill

- Cyflogadwyedd – £5m Cronfa Gymdeithasol Ewrop
- Rhyngwladol – Canolfan Safon Uwch yn Tsieina
- Angen llety ar gyfer myfyrwyr rhyngwladol
- Cefnogi'r Fargen Ddinesig

Other business development opportunities

- Employability – ESF funded £5m
- International – A Level centre in China
- Accommodation needed for international students
- Supporting the City Deal

Perfformiad Ariannol / Financial Performance

| | 2014 - 2015 | | 2017 – 2018 | |
|---|-------------|-----|-------------|-----|
| | £000 | | £000 | |
| Prif Grant / Main Grant | 25.9 | 74% | 23.3 | 53% |
| Seiliedig ar Waith / Work based | 1.7 | | 7.0 | |
| Incwm Arall / Other income | 7.4 | | 11.7 | |
| Cyfanswm Incwm / Total income | 35.0 | | 42.0 | |
| | | | | |
| | | | | |
| Gwarged gweithredu / Operating surplus | 2.2 | | 2.1 | |

Ystadau / Estates



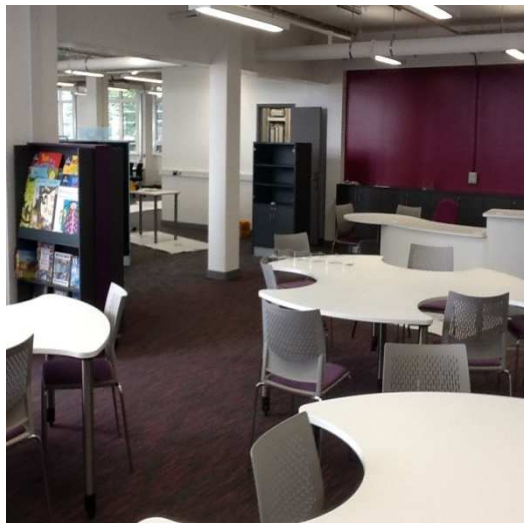
Gower College Swansea
Coleg Gŵyr Abertawe



Tycoch



Gorseinon



Tycoch



Ffordd y
Brenin /
Kingsway



Symud Ymlaen

- Rhagolwg o dwf parhaus yn y rhan fwyaf o feysydd
- Meysydd newydd datblygu busnes
- Caniatáu ailfuddsoddi yn y Coleg
- Cefnogi ffocws parhaus ar ddysgwyr ac ansawdd

Going Forward

- Continued growth forecast in most areas
 - New areas of business development
 - Allowing reinvestment in College
 - Supporting continued focus on learners and quality
- 